



**Proposition O Citizens' Bond Oversight Committee  
Agenda June 21, 2012**

**TIME:** 5:45 p.m.

**PLACE:** Sweetwater Union High School District  
Board Room  
1130 Fifth Avenue  
Chula Vista, CA 91911

**AGENDA:**

1. Call to Order
2. Approval of Meeting Minutes of May 12, 2012
3. Report from Outgoing CBOC Chair
4. Election of Chair
5. Public Comment on Items Not on the Agenda.
6. Construction Updates
  - a. Project status reports
  - b. Change order analysis
7. Update on the iPad Initiative
8. Update on Staffing
9. Update on Prop O and Prop BB finances
  - a. Remainder of BB Funds
  - b. Transfers between Funds 22 (bond) and 35 (state)
  - c. Funding update
10. Update on Response to the Prop O Performance Audit (response should be complete by end of June)
11. Consider Forming Sub-Committees
  - a. Annual report sub-committee
  - b. Project review sub-committee
12. Other Announcements
13. Establish Future Meetings
14. Adjourn

# Agenda Item 2

## Meeting Minutes

**Planning and Operations**  
 1130 Fifth Avenue  
 Chula Vista, CA 91911

**Project # 572-8100.00**  
 Tel: Fax:

**SUHSD Program Management**

**Bond Oversight Committee Meeting 32**

Date	Start	End	Next Meeting	Next Time	Prepared By	Company
5/12/2012	09:00 AM	10:53 AM	6/9/2012	09:00 AM	Alina Cruz	Sweetwater Union High School District

Location	Next Location	General Notes
Montgomery Middle School Construction Trailer in South Parking Lot 1051 Picador Blvd. San Diego, CA 92154	SUHSD Board Room 1130 Fifth Avenue Chula Vista, CA 91911	

**Attended By**

Sweetwater Union High School District - Paul Woods  
 Citizens' Bond Oversight Committee - Bernardo Vasquez  
 Citizens' Bond Oversight Committee - David Butler  
 Citizens' Bond Oversight Committee - Guillermo Camarena  
 Citizens' Bond Oversight Committee - Kevin O'Neill  
 Citizens' Bond Oversight Committee - Nick Marinovich  
 Eric Hall and Associates - Eric Hall  
 Sweetwater Union High School District - Karl Bradley

**Non-Attendees**

Sweetwater Union High School District - Dianne Russo

Item	Meeting Item Description	Resp	Status	Due Date	Compl'd	Cls'd
------	--------------------------	------	--------	----------	---------	-------

**1. Call to Order**

**Call to Order**

**003-001** Meeting called to order at 9:00 a.m.  
 Roll Call:  
 David Butler - Present  
 Guillermo Camarena - Present  
 Bernardo Vasquez - Present  
 Nick Marinovich - Present  
 Kevin O'Neill - Present

Bernardo Vasquez (CBOC) No

Item	Meeting Item Description	Resp	Status	Due Date	Compl'd	Cls'd
------	--------------------------	------	--------	----------	---------	-------

**1. General**

**Introductions**

**032-001** CBOC members, SUHSD staff and Eric Hall and Associates representatives introduced themselves.

Paul Woods (SUHSD) No

Item	Meeting Item Description	Resp	Status	Due Date	Compl'd	Cls'd
------	--------------------------	------	--------	----------	---------	-------

**2. Approval of Meeting Minutes**

**Minutes**

**003-003** Minutes for April 12, 2012, were unanimously approved.

**Meeting Minutes**

Planning and Operations 2

Item	Meeting Item Description	Resp	Status	Due Date	Compl'd	Cls'd
		Bernardo Vasquez (CBOC)				No

Item	Meeting Item Description	Resp	Status	Due Date	Compl'd	Cls'd
------	--------------------------	------	--------	----------	---------	-------

**3. Public Comment**

**Public comments**

003-006 There was no public comment.

Bernardo Vasquez(CBOC) No

Item	Meeting Item Description	Resp	Status	Due Date	Compl'd	Cls'd
------	--------------------------	------	--------	----------	---------	-------

**4. Other Issues and Information**

**Prop O Performance Audit**

**New Business**

032-002 Eric Hall told committee members about his background and presented the audit report. Bernardo Vasquez opened the floor to questions on the report.

The management performance portion was covered first. Mr. Hall clarified that although he recommended a forensic audit, there were no abnormalities when the invoices were spot checked. The selection process for consultants was questioned and Mr. Hall indicated that he recommended a board policy should be established for selection process and selection committees. He did not recommend having a superintendent or board member on the committee, but rather having a selection committee make a recommendation to the superintendent and then to the board. Mr. Vasquez made clear that for Phase 2 of Prop O, the committee would like the district and board members to know that they expect the district to follow the audit's recommendations and establish a sound policies and practices program for this next phase. A motion to have the CBOC chairman go to the next board meeting and request a joint meeting/workshop to discuss the implementation of the Prop O audit was unanimously approved. At the committee's request, staff clarified the new Chief Facilities Executive position. Design-build vs. lease-leaseback project costs, as shown in the report, were discussed.

The cost performance portion of the report was then covered. A/E errors and omissions and who covers this cost were discussed. The committee members were concerned about excessive costs to the district that they saw in the report. Mr. Vasquez reiterated that a report like the SGI Monthly report to the committee, with change order rates and details of the change orders, would provide this type of information to the committee in a timely manner.

Eric Hall (Eric Hall & Associates) No

Item	Meeting Item Description	Resp	Status	Due Date	Compl'd	Cls'd
------	--------------------------	------	--------	----------	---------	-------

**4. Report from CBOC Chair**

**Report from the CBOC Chair**

003-008 Bernardo Vasquez reminded staff that they have been waiting for various reports for the last five months. They would like to see the following by the next meeting: 1) an updated financing/ budgeting report; 2) a detailed organization chart with names/projects/percentage of time working on Prop O/percentage being charged to Prop O; 3) the approval process for the program; 4) project status on a project by project basis, including a timeline of what was projected and what is actual, as well as something reflecting financials for each project; and 5) the district's response to the audit and their intent going forward. CBOC members recommended that staff use SGI's formats for CBOC reports, which they felt were clear and detailed.

Bernardo No

**Meeting Minutes**

Planning and Operations 2

Item	Meeting Item Description	Resp	Status	Due Date	Compl'd	Cls'd
		Vasquez(CBOC)				

Item	Meeting Item Description	Resp	Status	Due Date	Compl'd	Cls'd
------	--------------------------	------	--------	----------	---------	-------

**6. Status of Prop O**

**Construction Update**

**008-010** Retention rates, construction defects, and warranty periods were discussed. Rusting of the HTH lockers and NCM paint defects were specifically addressed. The committee was concerned with the lack of a process to make sure that defect items are looked at within a 1-year warranty period. Staff assured them that there is already a process in place and that the district is currently gathering information before the warranty periods expire. Staff was asked to keep the committee informed on major defect items like the lockers. Mr. Vasquez once again mentioned the need for reports like SGI's former reports and suggested that he and another member meet with Paul Woods and Karl Bradley to review prior SGI reports so that they could indicate what the committee is looking for.

Paul Woods  
(SUHSD) No

Item	Meeting Item Description	Resp	Status	Due Date	Compl'd	Cls'd
------	--------------------------	------	--------	----------	---------	-------

**8. Other Business**

**Administrative Updates**

**030-002** a. CBOC membership update  
The four at-large positions have been filled. The committee is still missing a senior citizen organization member, a PTA member, a member of a taxpayer group, and a member of a business organization. The deadline for submission of applications to SUHSD Human Resources department is Friday, May 18th.

Paul Woods  
(SUHSD) No

**Next Meeting Date**

**031-001** The next CBOC meeting is scheduled on Saturday, June 9th at 9:00 a.m. at SOM.

Bernardo  
Vasquez(CBOC)  
; Paul Woods  
(SUHSD) No

Item	Meeting Item Description	Resp	Status	Due Date	Compl'd	Cls'd
------	--------------------------	------	--------	----------	---------	-------

**9. Meeting Adjourned**

**Adjourned**

**032-003** The meeting was adjourned to site tour at 10:53 a.m.

Bernardo  
Vasquez(CBOC) No

Cc:	Company Name	Contact Name	Copies	Notes
-----	--------------	--------------	--------	-------

End Comments



**SWEETWATER UNION HIGH SCHOOL DISTRICT**  
Planning & Construction Department • 1130 Fifth Avenue • Chula Vista, CA 91911  
(619) 691-5553 FAX (619) 420-0339  
E-mail: paul.woods@sweetwaterschools.org

June 21, 2012

## Proposition O Project Updates

Updated projects are **HIGHLIGHTED**:

### *Chula Vista High School:*

**CVH Interim Housing** (*BCA, Turner, 100%*) – Closed without certification on 7/21/2011. Final documents will be submitted to DSA.

**CVH Portable Removal/Replacement** (*Hector Reyes, tbd, design 0%*) – As a requirement of receiving about \$6.4 million in State funding for SOH Project 1, we are required to remove 18 portables from CVH by January 25, 2013. 12 portables were removed during the construction of the Performing Arts Center. Six portable classrooms will be removed and replaced with interim housing. The scope of work is being finalized with site staff.

### *Chula Vista Middle School:*

**CVM Project 1** (*RRC, Edge, 100%*) – Project is complete except for LEED documentation and DSA certification.

**CVM Portable Upgrade** (*RRC, tbd, design 90%*) – Six portables were relocated as part of Project 1 and a separate contract is needed to finish painting, upgrade the interiors and address some site paving issues. Final scope of work will be determined and then a bid package will be advertised.

### *Hilltop High School:*

**HTH Project 1** (*RRC, Pacific Building Group, 100%*) – Project is complete except for LEED documentation and DSA certification.

**HTH Interim Housing** (*RRC, Fordyce, 100%*) – Final documents will be submitted to DSA for closeout. Because the interim housing has been removed, DSA may elect to void the project.

**HTH Interim Housing Removal** (*RRC, GEM Industrial, 100%*) – Final documents will be submitted to DSA for closeout.

**HTH Title IX Field Upgrades & Restroom** (*RRC, Western Rim, 98%*) – Field is complete. DSA requiring testing of the existing concrete foundation is complete and the foundation has

been approved by DSA. Architects are providing drawing for installation on the existing foundation.

**MAAC Charter School:**

**MAAC Kitchen** (*Michael Burke, tbd, 0%*) – Only 1 bid was received and it was over budget. The District and MAAC are reviewing options at this point.

**Montgomery High School:**

**MOH Project 1** (*RRC, Swinerton, 100%*) – The project is complete. Final documentation will be submitted to DSA for closeout.

**MOH Interim Housing Removal and Basketball Courts** (*RRC, AEL Construction, 100%*) – The project is complete. Final documentation will be submitted to DSA for closeout.

**MOH Project 2** (*tbd, tbd, 0%*) – The San Diego County Office of Education has completed numerous community meetings for input on the scope of work. Included in the priority list is a new gym, classrooms and other modernization work. SDCOE has issued a request for proposals (RFP) to prequalified design firms and proposals are due in July.

**Montgomery Middle School:**

**MOM Interim Library and Food Service** (*RRC, Balfour Beatty, 100%*) – The project is complete. Final documentation will be submitted to DSA for closeout.

**MOM Project 1** (*RRC, Balfour Beatty, 15%*) – Underground utility work and grading continue. A sub-contractor damaged electrical lines installed by a differ contractor and repairs are in progress. Completion scheduled for September 2013 (move in during fall break).

**Mar Vista High School:**

**MVH Project 1** (*LPA, Augustine, 100%*) – Project is complete except for DSA certification. Documents will be submitted and we are awaiting DSA approval of final change orders.

**MVH Miscellaneous** (*LPA, tbd, design 90%*) – A bid package will be prepared for stairs and a stage necessary to complete Project 1.

**MVH Title IX Field Upgrades** (*RNT, tbd, design 95%*) – The plans for the new team room, dugouts and fencing for the girls' softball field have been submitted to DSA.

**MVH Project 2** (*tbd, tbd, 0%*) – On hold pending final prioritization of projects.

**National City Middle School:**

**NCM Portable Removal** (*LPA, tbd, design 95%*) – As a requirement of State funding received for SOM Project 1, we will be removing one portable from NCM by October 4, 2012.

**NCM Project 1** (*LPA, RC Construction, 99%*) – The work is essentially complete. The feature panels are “on order,” but the contractor has been telling us that for weeks. The painting on most of the exterior metals (railings in particular) is defective and the District is testing the

painting to determine if it was applied properly. Some retention monies are still being withheld pending repair of the defective work and installation of the panels.

**NCM Project 2** (*LPA, tbd, design 95%*) – Project is DSA approved, but on hold pending funding. The architect is evaluating splitting the project into two phases. If approved, Project 2A would be demolition of the 200, 400 and 500 buildings, demolition of one portable (required for ORG funding), a new quad to fix the elevation problems and a new parking lot. Depending on enrollment, a few interim housing portables may also be needed. Then Project 2B would be construction of the new 2-story classroom building, completion of the quad, and removal of interim housing.

**Southwest High School:**

**SOH Project 1** (*LPA, HAR, terminated on 6/21/11*) – HAR Construction was terminated on June 21, 2011. In litigation.

**SOH Project 1A** (*LPA, Soltek Pacific, 95%*) – Soltek Pacific began construction to complete **Project 1** on January 3<sup>rd</sup> and has a occupancy date of July 2, 2012. The project is nearly complete and moving has already begun. The portable removal part of the project will continue into August.

**SOH Cafeteria Mod** (*LPA, tbd, DSA approved*) – Project is DSA approved. On hold pending final prioritization of projects.

**Southwest Middle School:**

**SOM Project 1** (*LPA, HAR, terminated on 6/21/11*) – HAR Construction terminated on June 21, 2011. In litigation.

**SOM Project 1A** (*BCA, GEM Industrial, 99%*) – Complete except for certification of the fire rated doors and installation of the motor on the automatic gate.

**SOM Field** (*Lightfoot, 3D Enterprises, 99%*) – Complete except for one small fence.

**SOM Site Improvements** (*BCA, 3D Enterprises, 100%*) – Work is complete.

**SOM Project 2** (*tbd, tbd, 0%*) – The district has terminated BCA architects on this project and is in the architectural selection process. Staff will finalize the revised scope of work for the west side of the campus with the new architect.

**Sweetwater Union High School:**

**SUH Project 1** (*BCA, Sundt, 100%*) – Project is complete and occasional warranty issues are being addressed.

**SUH Welding Building** (*BCA, Grahovac is 100% complete, project is 95% complete*) – Work by Grahovac is complete. The district has terminated BCA architects on this project and a new architect will complete the project under SUH Welding Building 2.

**SUH Welding Building<sup>2</sup>** (*Reyes, tbd, 0%*) – The architect will be preparing a bid package for the final five percent of the project.

**SUH Portable Removal** (*Hector Reyes, GA Dominguez, 100%*) – Portables were removed in January.

**SUH Site restoration** (*Hector Reyes, design phase 85%*) – Design work continues on the parking lot to restore the site after removal of the portables. Coordination work with SDG&E is being done. This project may need to be expanded to include a changing room for special education because the current facility is in an inadequate portable toilet building.

**SUH Stadium Track & Field** (*RNT,tbd, 0%*) – Design will be starting this month.

***Projects on Multiple Sites:***

**Fire Alarm Upgrades** (*various, tbd, DSA approved*) – DSA approval has been obtained to upgrade the fire alarm systems at 19 school sites. The projects are on hold pending identification of the highest priority projects.

**PPA (Solar at 10 sites)** (*various, Lend Lease, 10%*) – Construction has begun at CVH, MOH and ORH on carport solar support structures in the parking lots. At MOH, foundations have been poured and completion is scheduled for August with some parking released for the start of school. At CVH, support columns are in place and electrical trenching is complete; completion is scheduled for late July with some parking to be released for the start of school. At ORH, the contractor hit power cables while drilling for foundations and will correct the damage. At CPH, the contractor is just starting to install construction trailers and work will begin soon. DSA approval has been obtained on the parking lot carport installations at CVH, ORH, MOH and SOH. The carport installations at BVH and CPH should be approved soon. The roof installations at MVH, OLH, ORH, SUH and SYH were submitted to DSA on April 2<sup>nd</sup> with approval expected in a few months. Completion of installation at all 10 sites is planned by December 2012.

***Prop BB Close-out Phase Projects:***

**CPH Mod 1A** – Closed without certification on 12/4/2008. DSA has approved a testing plan to complete the closeout. A testing firm has been hired to complete the work.

**CPH Mod 2A** – Closed without certification on 10/9/2008. Documents have been submitted to DSA and we are awaiting certification.

**CPH 6 Portables (400)** – Closed without certification on 7/21/2011. Documents will be submitted to DSA.

**CPM Mod** - Closed without certification on 7/21/2011. Documents have been submitted to DSA and we are awaiting certification.

**GJH 8 Portables** – Closed without certification on 3/21/2008. Architect is gathering documents for closeout.



**HTH Scoreboard Replacement** – Closed without certification on 3/13/2009. Compliance was completed under HTH Project 1 and will be certified simultaneously with that project.

**HTM Shade Structure and Modernization** - Closed without certification on 7/28/2011. Documents will be submitted to DSA for certification.

**SOH 1 Portable** – Closed without certification on 1/15/2008. Need to submit documents to DSA.

**SOH Portables** – Portables have been removed which means that the project can be voided after certification of the SOH restroom.

**SOH Restroom Portable** – Documents will be submitted for DSA certification.

**SOH Rehab Adaptive PE** – Closed without certification on 10/13/2010. Need to submit documents to DSA.

***Prop O Completed Projects Certified by the Division of State Architect (DSA):***

BVH	Bleacher Replacement	Certified on 10/28/09
CVH	Stadium Repairs	Certified on 5/29/09
GJH	Health Center	Certified on 2/24/11
HTH	Bleacher Replacement	Certified on 10/28/08
MOH	Interim Housing	Certified on 10/27/09
MOM	Interim Housing	Certified on 8/10/10
MOM	Interim Housing Restroom	Certified on 7/15/11
MVH	Interim Housing	Certified on 2/24/11
NCM	Interim Housing	Certified on 2/22/10
SOM	Interim Housing	Certified on 7/28/11
SUH	Stadium Repairs	Certified on 5/29/09
SUH	Interim Housing	Certified on 7/21/11

- Acronyms (other than school sites):  
 BCA – Bunton Clifford Architects  
 DSA – Division of State Architect  
 LPA – LPA, Inc. Architects  
 RNT – Roesling Nakamura Terada Architects  
 RRC – Ruhnau Ruhnau Clarke Architects  
 tbd – to be determined

# Prop O Change Order Summary

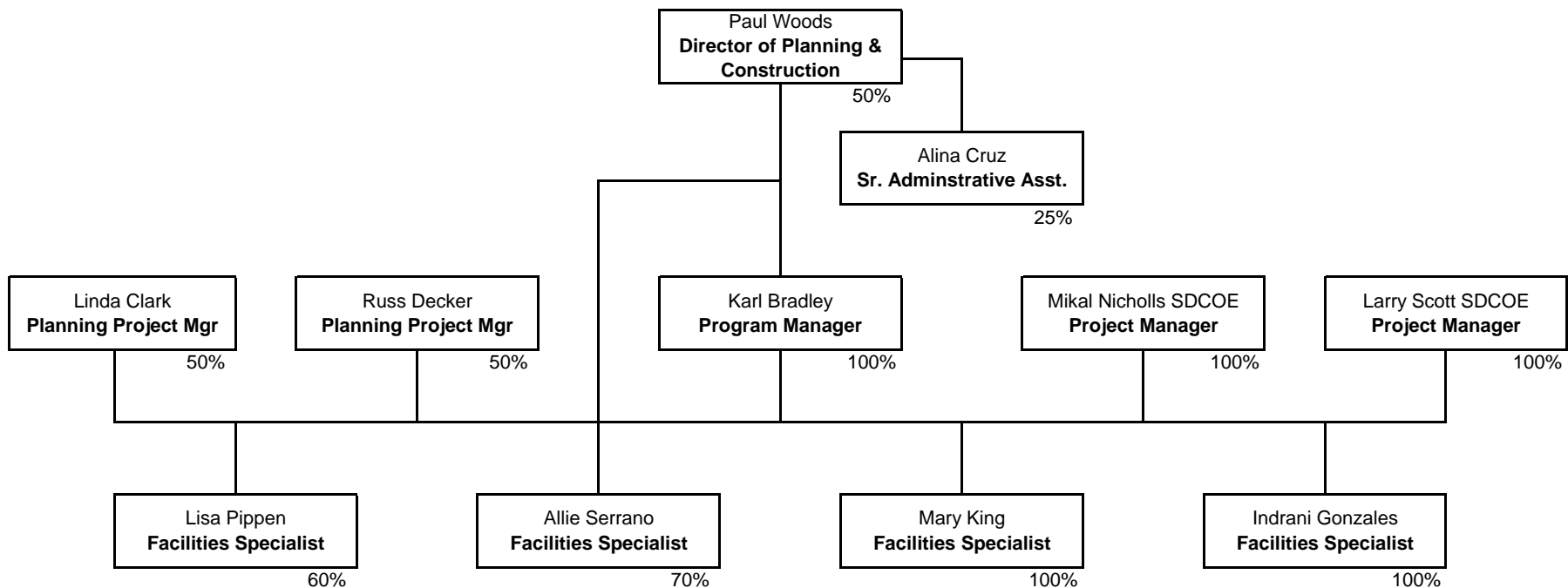
# Agenda Item 6.b.

Site	Contract	Contractor	Contract Amt.	Total CO \$	CO %	Notes
BVH	Bleachers	Fordyce Construction	\$220,039.00	\$0.00	0.00%	
CVH	Interim Housing	Turner Construction	\$1,116,956.00	\$16,093.00	1.44%	
CVH	Project 1	Turner Construction	\$18,508,044.00	\$812,909.00	4.39%	
CVM	Project 1	Edge Development, Inc.	\$6,896,007.00	\$554,712.00	8.04%	
GJH	Health Clinic	Fordyce Construction	\$153,998.00	\$11,315.00	7.35%	
HTH	Interim Housing	Fordyce Construction	\$499,000.00	\$27,837.00	5.58%	
HTH	Project 1	Pacific Building Group	\$12,657,000.00	\$2,010,266.00	15.88%	[1]
HTH	Removal of Interim Housing	GEM Industrial Electric	\$259,860.00	\$20,976.00	8.07%	
HTH	Title IX Field and Restroom	Whitwer Construction, Inc.	\$116,800.00	\$5,708.00	4.89%	
MOH	Interim Housing	Symbolic Builders	\$148,585.00	\$0.00	0.00%	
MOH	Turf Field Project	Byrom-Davey, Inc.	\$2,636,000.00	\$195,997.00	7.44%	
MOH	Project 1	SMC Construction Company	\$8,798,790.00	\$23,331.00	0.27%	
MOH	Project 1A (take-over contract)	Swinerton Builders	\$11,197,902.00	\$508,617.00	4.54%	
MOH	Interim Housing Removal	AEL Construction, Inc.	\$491,061.00	\$13,935.82	2.84%	
MOM	Interim Housing	Symbolic Builders	\$497,000.00	\$20,766.00	4.18%	
MOM	Project 1	Barnhart Balfour Beatty, Inc.	\$20,491,739.00	\$73,804.00	0.36%	[2]
MVH	Interim Housing	GEM Industrial Electric	\$340,480.00	\$34,018.00	9.99%	[3]
MVH	Project 1	The Augustine Company	\$4,609,518.00	\$460,000.00	9.98%	[4]
NCM	Interim Housing	Haley Construction	\$318,444.00	\$55,932.00	17.56%	[5]
NCM	Project 1	R.C. Construction	\$6,998,000.00	\$689,263.55	9.85%	[6]
SOH	Project 1	HAR Construction	\$8,400,000.00	\$134,759.00	1.60%	
SOH	Project 1A (take-over contract)	Soltek Pacific Construction	\$4,242,500.00	\$36,002.43	0.85%	
SOM	Interim Housing	Sturgeon General, Inc.	\$498,000.00	\$40,564.00	8.15%	
SOM	Project 1	HAR Construction	\$6,236,000.00	\$459,178.46	7.36%	
SOM	Project 1A (take-over contract)	GEM Industrial, Inc.	\$194,860.00	\$19,378.04	9.94%	[7]
SOM	Field	3D Enterprises	\$487,000.00	\$0.00	0.00%	
SOM	Sitework	3D Enterprises	\$297,726.00	\$0.00	0.00%	
SOM	Miscellaneous construction	Grahovac Construction	\$731,485.00	\$65,355.00	8.93%	
SUH	Interim Housing	Sundt Construction	\$2,893,451.00	\$28,885.00	1.00%	
SUH	Project 1	Sundt Construction	\$28,314,489.00	\$769,571.00	2.72%	
SUH	Welding Building	Grahovac Construction	\$1,770,000.00	\$176,804.29	9.99%	[8]
SUH	Portable Removal	GA Dominguez	\$152,800.00	\$0.00	0.00%	
<b>Totals</b>			<b>\$151,173,534.00</b>	<b>\$7,265,977.59</b>	<b>4.81%</b>	[9]

## Notes

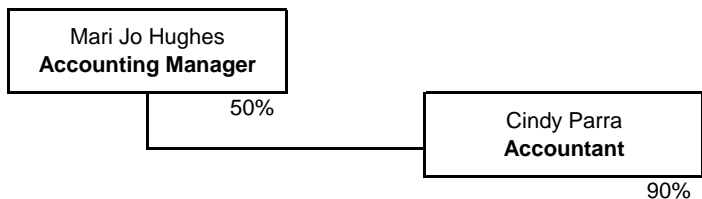
- [1] The total change orders for HTH reflect revisions to the original scope of work due to omissions in the original bid set of drawings, revisions to resolve conflicts within the existing plans, and work required to repair embedded fiber optic cabling and conduits not identified in the original site plans. The change order total includes time delay claims from the contractor which resulted from, among other matters, the revisions described above. In approving and ratifying the final change order, the board found that due to the time constraints on the completion of the work, the fact that the contractor was already mobilized and performing the work, and that time delay costs were significant, there was no advantage to the district to attempt to re-bid the work reflected in the final change order, and in the case of the time-delay costs, it would be impossible.
- [2] Combined Balfour Beatty contracts including demolition in 2011, interim library and food services, demolition in 2012 and Project 1.
- [3] Various changes including additional offices.
- [4] Various changes because of lack of complete site design.
- [5] Settlement agreement for a claim by Haley Construction during the interim housing project.
- [6] An unknown septic tank and other issues resulted in changes nearing 10%.
- [7] The surety tendered a very small contract and owner requested changes to speed up construction as well as correcting work caused the change orders to reach 10%
- [8] Design problems resulted in extra cost reaching 10%. The architect, BCA, has been terminated and a second construction contract will be bid to complete the project.
- [9] There have been 172 change orders under Prop O. Only 3 of the ratified change orders exceeded the \$150,000 approval level which required the approval of the Superintendent.

# Planning and Construction Staffing

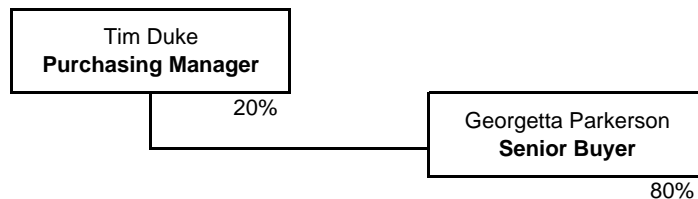


## Support Staff from other Departments

### FINANCE



### PURCHASING



Grants & Communication  
Dept  
\$15,000

Agenda Item 8

## Planning Department Major Project Assignments

Prop O funded

District Funded

PM 1 - Linda Clark 50% Prop O	PM 2 - Russ Decker 50% Prop O	PM 3 - Karl Bradley 100% Prop O	PM 4 - Larry Scott 100% Prop O	PM 5 - Mikal Nicholls 100% Prop O
<b>Current</b>				
SUH Field Design (RNT)	SOM P1 Completion (Gem)	CVM Portables (RRC)	MOM P1 (Balfour Beatty)	SOH P1 (Soltek)
MVH T9 Design (RNT)	MAAC Kitchen (Burke)	CPH T9	SUH Welding (Grahovac)	PPA (10 sites)
MVH Misc Design (LPA)	OLH Various Projects 2 (JRM)	SOM P2	SUH Welding 2 (Reyes)	MOH Gym/Parking
NCM 2A/2B Design (LPA)	BVM Modernization	CVH Port ORG (Reyes)	SUH Ports/Parking (Reyes)	
ELH Amphitheater	BVH Modernization	CVH warranty issues		
ELH Observatory	ORH Concession Building (SDSE)	Prop O warranty issues		
ELH Parent Drop-off	ORH Track & Field Replacement (Lord)			
ELH Ports/Modernization?	7 Cell Towers AT&T			
	OLH Marquee (tbd)			
	NCA Cisco Lab (LPA/OMB)			
	ORH Stadium Lights (SDSE)			
	SYH Stadium Lights (SDSE)			
<b>Future</b>				
MVH P2 (sp ed)		NCM 2A Construction	SUH Field Construction	
		Fire Alarm upgrades		
		SOH Cafeteria		
<b>Closeout</b>				
CPM Charger Challenge Grant	SOM Site Imp. (3D Enterprises)			CPH BB 1A
ELH Learning Center/Science (GEM)	SOM Field (3D Enterprises)			CPH BB 1B
SYH PA Roofing drain (Sundt)	MOH (Swinerton)			CPM BB Mod
RDM Cell Tower Irrigation	HTH T9 Field (Western Rim)			CVH Interim Housing
ELM Shade Structure	CPH MVM Smart Boards (IVS)			GJH BB Relos
MOM YMCA Soccer Rink	MOH Port Removal (AEL)			HTH Interim Housing
MOM YMCA Comm Ctr				HTH P1
				HTH Portable Removal
				HTH Scoreboard
				MOH Int Housing Removal
				MOH Scoreboard
				MOM Int Library
				NCM Interim Housing
				SOH BB Relos
				SOH BB Restrooms
				SUH P1

# Proposition O Staffing Analysis

Staffing shown in FTEs charged to Prop O

District Staff
SGI Staff & Consultants
Consultants

2011 Prop O Staffing	District	SGI	2012 Prop O Staffing	District
Director	0.50		Director	0.50
Sr. Admin Asst.	0.25		Sr. Admin Asst.	0.25
Program Manager		0.50		
Office Manager		1.00		
Planning Project Manager	0.50		Planning Project Manager	0.50
Planning Project Manager	0.50		Planning Project Manager	0.50
Design Manager		1.00	Program Manager	1.00
Senior Project Manager		1.00	SDCOE Project Manager	0.95
Senior Project Manager		1.00	SDCOE Project Manager	1.00
Senior Project Manager		1.00		
Project Manager		1.00		
Project Manager		1.00		
Project Manager		1.00		
Facilities Specialist	0.10		Facilities Specialist	0.60
Project Specialist	0.10		Facilities Specialist	0.70
Assistant PM		1.00	Facilities Specialist	1.00
Assistant PM		1.00	Facilities Specialist	1.00
Assistant PM		1.00		
Accounting Manager	0.50		Accounting Manager	0.50
Accountant	0.90		Accountant	0.90
Program Controls Manager		1.00		
Controls Engineer		1.00		
Program Quality Manager		1.00		
Purchasing Manager	0.20		Purchasing Manager	0.20
Purchasing Sr. Buyer	0.80		Purchasing Sr. Buyer	0.80
Controls Engineer		1.00		
Prolog (Rotech)		0.50	Prolog (Rotech)	0.30
Scheduling (Rotech)		0.50	Scheduling (SDCOE)	0.05
Outreach Manager		1.60	Grants & Communication	0.10
Communication Specialist		0.40		
Communications Team		1.00		
	4.35	19.50		10.85
District Staff		4.35	District Staff	8.55
SGI Staff and Consultants		19.50	Consultants	2.30
<b>Total Staffing</b>		<b>23.85</b>	<b>Total Staffing</b>	<b>10.85</b>
District Cost		\$451,852	District Cost	\$870,742
SGI Staff and Consultants		\$4,983,880	Consultants	\$631,554
<b>Annual Cost</b>		<b>\$5,435,732</b>	<b>Annual Cost</b>	<b>\$1,502,296</b>

<b>Annual Savings</b>	<b>\$3,933,436</b>
-----------------------	--------------------

**Proposition BB**  
**SWEETWATER UNION HIGH SCHOOL DISTRICT**  
**Building Fund 21**  
**2012-2013 Proposed Budget**

	2010-11 Actuals	2011-12 Projected	2012-13 Proposed Budget
<b>BEGINNING BALANCE</b>	\$ 6,601,047	\$ 6,539,006	\$ 427,804
<b>REVENUE</b>			
State Facility Apportionments	\$ -	\$ -	\$ -
Federal Revenue			
Proceeds from Bond Sale	-	-	
Local Revenue	63,311	54,927	3,337
Transfers In	-		
<b>Total Revenue</b>	<u>\$ 63,311</u>	<u>\$ 54,927</u>	<u>\$ 3,337</u>
<b>EXPENDITURES</b>			
Salaries/Benefits			
Supplies			
Services/Administrative Expense			
Site/Facility Expense	125,352	6,166,129	431,141
Transfers Out	-	-	
<b>Total Expenditures</b>	<u>\$ 125,352</u>	<u>\$ 6,166,129</u>	<u>\$ 431,141</u>
Net Surplus/Deficit	\$ (62,041)	\$ (6,111,202)	\$ (427,804)
<b>ENDING BALANCE</b>	<u>\$ 6,539,006</u>	<u>\$ 427,804</u>	<u>\$ (0)</u>

Agenda Item 9.a.

### Timeline of Loans for General Fund Cash Flow

- Sep-10 Budget Workshop explained cash flow borrowings
- Dec-10 Board requested to stop borrowing from Building Fund
- Jan-11 Paid back Building Fund  
 Borrowed from State Facility Fund ( State Matching)  
 Began receiving State Matching Funds
- 11-Nov Board approved borrowing from the Mellos Roos Funds  
 Began JV'ing

Building Fund Cash		State Facilities Cash	
Issued Bonds	+ 180,000,000	Prior Bal	+ 18,000,000
Remainder Prop BB	+ 15,000,000	State Match	+ 53,500,000
	+ 53,500,000		- 53,500,000 Transfer
	189,000,000		

Building Fund Expenses		State Facilities Expenses	
Spent on Projects	+ 189,000,000		+ 53,500,000
	- 53,500,000 Moved to State		



Prop O Fund

Sweetwater Union High School District  
 Monthly Cash Balances at County Treasury by Oracle #  
 1/1/11-2/29/12

Amount of Funds  
 Borrowed Per Month

Building Fund 21 Oracle 57205

Month ending	Fund	Fund Desc	District	Beginning Cash Balance	Cash Deposits	Payments	Transfers In	Transfers Out	Ending Cash Balance
1/31/2011	57205	046_10 SWEETWATER UNION HI BLD	046	21,782,018.60	302.00	-	41,518,798.15	(6,444,592.05)	57,556,528.00
2/28/2011	57205	046_10 SWEETWATER UNION HI BLD	046	57,899,528.90	-	-	331.00	(3,966,869.39)	53,866,188.51
3/31/2011	57205	046_10 SWEETWATER UNION HI BLD	046	53,866,188.51	1,044.83	-	-	(5,711,462.80)	48,149,750.66
4/30/2011	57205	046_10 SWEETWATER UNION HI BLD	046	48,149,750.66	379.00	-	73,737.40	(5,503,541.32)	42,720,325.74
5/31/2011	57205	046_10 SWEETWATER UNION HI BLD	046	42,720,325.74	400.00	-	-	(3,429,021.88)	39,291,704.08
6/30/2011	57205	046_10 SWEETWATER UNION HI BLD	046	39,291,704.08	718.00	-	48,863.77	(7,662,762.18)	31,778,223.64
7/31/2011	57205	046_10 SWEETWATER UNION HI BLD	046	31,778,223.64	3,408.44	-	55,139.88	(825,808.14)	31,011,201.78
8/31/2011	57205	046_10 SWEETWATER UNION HI BLD	046	31,011,201.78	85,488.00	-	-	(2,848,824.55)	28,850,125.24
9/30/2011	57205	046_10 SWEETWATER UNION HI BLD	046	28,850,125.24	100.00	-	-	(3,544,859.58)	24,705,989.06
10/31/2011	57205	046_10 SWEETWATER UNION HI BLD	046	24,705,989.06	-	-	42,478.04	(2,876,832.90)	22,080,113.80
11/30/2011	57205	046_10 SWEETWATER UNION HI BLD	046	22,080,113.80	-	-	416,907.99	(1,280,339.25)	21,190,442.54
12/31/2011	57205	046_10 SWEETWATER UNION HI BLD	046	21,190,442.54	106.00	-	28,173,948.00	(1,813,475.33)	48,857,021.21
1/31/2012	57205	046_10 SWEETWATER UNION HI BLD	046	48,857,021.21	1,385.38	-	-	(1,408,624.27)	47,837,980.01
2/29/2012	57205	046_10 SWEETWATER UNION HI BLD	046	47,837,980.01	-	-	-	(1,273,145.50)	46,364,844.81

State School Fund 30 Oracle 57225

Month ending	Fund	Fund Desc	District	Beginning Cash Balance	Cash Deposits	Payments	Transfers In = \$72m	Transfers Out = \$47m	Ending Cash Balance
1/31/2011	57225	046_45 SWEETWATER UN HI ST SC BL	046	-	-	-	-	-	-
2/28/2011	57225	046_45 SWEETWATER UN HI ST SC BL	046	-	-	-	-	-	-
3/31/2011	57225	046_45 SWEETWATER UN HI ST SC BL	046	-	-	-	-	-	-
4/30/2011	57225	046_45 SWEETWATER UN HI ST SC BL	046	-	-	-	-	-	-
5/31/2011	57225	046_45 SWEETWATER UN HI ST SC BL	046	-	-	-	-	-	-
6/30/2011	57225	046_45 SWEETWATER UN HI ST SC BL	046	-	-	-	-	-	-
7/31/2011	57225	046_45 SWEETWATER UN HI ST SC BL	046	-	-	-	-	-	-
8/31/2011	57225	046_45 SWEETWATER UN HI ST SC BL	046	-	-	-	-	-	-
9/30/2011	57225	046_45 SWEETWATER UN HI ST SC BL	046	-	-	-	-	-	-
10/31/2011	57225	046_45 SWEETWATER UN HI ST SC BL	046	-	-	-	-	-	-
11/30/2011	57225	046_45 SWEETWATER UN HI ST SC BL	046	-	-	-	-	-	-
12/31/2011	57225	046_45 SWEETWATER UN HI ST SC BL	046	-	-	-	-	-	-
1/31/2012	57225	046_45 SWEETWATER UN HI ST SC BL	046	-	-	-	-	-	-
2/29/2012	57225	046_10 SWEETWATER UNION HI BLD	046	-	-	-	-	-	-

State Match Fund

County School FF Fund 35 Oracle 57228

Month ending	Fund	Fund Desc	District	Beginning Cash Balance	Cash Deposits	Payments	Transfers In	Transfers Out	Ending Cash Balance
1/31/2011	57228	046_48 SWEETWATER STATE SCH FAC	046	14,787,160.00	-	-	42,748.88	(5,026,480.36)	9,781,431.53
2/28/2011	57228	046_48 SWEETWATER STATE SCH FAC	046	9,781,431.53	-	-	22,938,035.00	(273,381.44)	32,444,705.09
3/31/2011	57228	046_48 SWEETWATER STATE SCH FAC	046	32,444,705.09	-	-	15,750,472.00	(17,610,414.80)	28,884,762.29
4/30/2011	57228	046_48 SWEETWATER STATE SCH FAC	046	28,884,762.29	-	-	30,420,116.19	(7,748,232.13)	51,366,846.35
5/31/2011	57228	046_48 SWEETWATER STATE SCH FAC	046	51,366,846.35	-	-	19,142,487.00	(18,431,485.40)	52,087,828.95
6/30/2011	57228	046_48 SWEETWATER STATE SCH FAC	046	52,087,828.95	-	-	6,124,783.48	(32,070,727.86)	26,112,685.75
7/31/2011	57228	046_48 SWEETWATER STATE SCH FAC	046	26,112,685.75	-	-	27,071,828.24	(13,630,377.80)	38,854,136.19
8/31/2011	57228	046_48 SWEETWATER STATE SCH FAC	046	38,854,136.19	1,112.71	-	-	(7,861,145.37)	31,874,103.53
9/30/2011	57228	046_48 SWEETWATER STATE SCH FAC	046	31,874,103.53	-	-	23,385,000.00	(470,703.08)	54,569,400.53
10/31/2011	57228	046_48 SWEETWATER STATE SCH FAC	046	54,569,400.53	-	-	16,054,965.85	(18,245,165.88)	54,369,210.52
11/30/2011	57228	046_48 SWEETWATER STATE SCH FAC	046	54,369,210.52	-	-	-	(0,480.38)	54,369,210.16
12/31/2011	57228	046_48 SWEETWATER STATE SCH FAC	046	54,369,210.16	-	-	2,500,000.00	(28,913,884.34)	28,941,035.82
1/31/2012	57228	046_48 SWEETWATER STATE SCH FAC	046	28,941,035.82	-	-	115,802.31	(310,824.48)	28,746,213.65
2/29/2012	57228	046_48 SWEETWATER STATE SCH FAC	046	28,746,213.65	-	-	6,404,908.00	(61,322.30)	33,158,799.35

Amount of Funds  
 Borrowed Per Month

As of May 2011, SUHSD had received \$55m from state. Ending cash balance should be greater than \$55m. If it is not, then money is being used elsewhere

\* C = OPSC \* 5,235,788 + 34,330.19 + 25,150,000 = 30,420,118.19  
 Interest Temp loan repayment  
 \* D = OPSC \* 12,164,467 + 6,500,000 = 19,142,467.00  
 Interest Temp loan repayment

Transfers In = \$170m  
 Transfers Out = \$152m

This is  
 Mod 1 200,380  
 Mod 2 105,624  
 Mod 1 28,35,832  
 EHA 2,370,140  
 6,464,906 ✓  
 w/ 2,370,140 EHA =



Office of Public School Construction



Public School Construction DGS

School Facilities Program: Fund Release Report by District

Claims Processed for Sweetwater Union High School District				
Project No.	Claim Schedule Number	OPSC Processing Date	Warrant Issued Date*	Amount Released
50-68411-02-006	2011187	2/3/2012	2/22/2012	F \$2,370,400.00
57-68411-00-040	2011113	12/29/2011	1/10/2012	E \$200,380.00
57-68411-00-041	2011113	12/29/2011	1/10/2012	E \$1,058,294.00
57-68411-00-042	2011113	12/29/2011	1/10/2012	E \$2,835,832.00
56-68411-01-005	2010368	3/10/2011	4/8/2011	C \$5,235,768.00
57-68411-00-037	2010373	3/10/2011	5/3/2011	D \$460,268.00
57-68411-00-038	2010373	3/10/2011	5/3/2011	D \$755,125.00
57-68411-00-037	2010374	3/10/2011	5/3/2011	D \$21,371.00
56-68411-01-004	2010385	3/9/2011	5/3/2011	D \$14,155.00
56-68411-01-004	2010358	3/9/2011	5/3/2011	D \$297,872.00
57-68411-00-039	2010359	3/9/2011	5/3/2011	D \$1,093,676.00
56-68411-01-003	2010337	3/2/2011	3/18/2011	B \$4,914,054.00
56-68411-01-003	2010338	3/2/2011	3/18/2011	B \$107,199.00
50-68411-01-033	2010326	2/25/2011	3/18/2011	B \$1,086,754.00
50-68411-01-033	2010327	2/25/2011	3/18/2011	B \$16,217.00
50-68411-01-033	2010328	2/25/2011	3/18/2011	B \$20,119.00
50-68411-01-032	2010320	2/24/2011	3/14/2011	B \$7,360,550.00
50-68411-01-032	2010321	2/24/2011	3/14/2011	B \$225,003.00
50-68411-01-032	2010322	2/24/2011	3/14/2011	B \$40,576.00
57-68411-00-034	2010223	1/26/2011	2/15/2011	A \$1,522,620.00
57-68411-00-035	2010223	1/26/2011	2/15/2011	A \$930,671.00
57-68411-00-038	2010223	1/26/2011	2/15/2011	A \$5,108,768.00
57-68411-00-034	2010224	1/26/2011	2/15/2011	A \$93,648.00
57-68411-00-035	2010224	1/26/2011	2/15/2011	A \$20,060.00
57-68411-00-036	2010224	1/26/2011	2/15/2011	A \$149,522.00
57-68411-00-033	2010231	1/26/2011	2/15/2011	A \$613,020.00
50-68411-01-031	2010209	1/24/2011	2/14/2011	A \$618,192.00
50-68411-01-031	2010210	1/24/2011	2/14/2011	A \$9,859.00
57-68411-00-032	2010204	1/21/2011	2/8/2011	A \$5,499,953.00
57-68411-00-032	2010206	1/21/2011	2/4/2011	A \$299,860.00
56-68411-01-001	2010203	1/20/2011	2/8/2011	A \$6,937,263.00
56-68411-01-002	2010203	1/20/2011	2/8/2011	A \$349,377.00
55-68411-00-001	2010199	1/19/2011	2/4/2011	A \$1,435,921.00
55-68411-00-002	2009030	9/24/2009	10/13/2009	\$3,000,000.00
50-68411-02-005	2008079	10/21/2008	11/4/2008	\$495,661.00
57-68411-00-029	2007211	5/28/2008	6/6/2008	\$1,237,773.00
50-68411-02-005	2007210	4/25/2008	5/5/2008	\$8,730,155.00
55-68411-02-001	2007211	4/14/2008	4/25/2008	\$500,000.00

Monthly Total

EAST HILLS ACADEMY - Not Prop'd  
 A002904 mod 1 2/13/12  
 A002904 mod 2 2/13/12  
 A002904 mod 1 2/13/12  
 A004440 SUH ORG 4/13/11  
 A004878 SompI mod 2 5/6/11  
 A004878 SompI mod 1 5/6/11  
 A004860 SompI mod 1 5/6/11  
 A004879 SompI ORG 5/6/11  
 A004865 SompI ORG 5/6/11  
 A004864 SUH PI mod 1 5/6/11  
 A004047 HTH PI ORG 3/29/11  
 A004043 HTH PI ORG 3/29/11  
 A004046 HTH PI New Construction 3/29/11  
 A004045 HTH New Construction 3/29/11  
 A004044 HTH PI New Construction 3/29/11  
 A003933 SUH PI New Construction 3/17/11  
 A003933 SUH PI New Construction 3/17/11  
 A003933 SUH PI New Construction 3/17/11  
 A003468 S OH PI mod 1 2/22/11  
 A003452 CVM PI mod 1 2/22/11  
 A003452 HTH PI mod 1 2/22/11  
 A003469 S OH PI mod 1 2/25/11  
 A003469 CVM PI mod 1 2/25/11  
 A003469 HTH PI mod 1 2/25/11  
 A003474 NCMP I mod 1 2/22/11  
 A003451 NCMP I New Construction 2/18/11  
 A003452 NCMP I New Construction 2/18/11  
 A003373 CVM PI mod 1 2/25/11  
 A003349 CVH PI mod 1 2/10/11  
 A003374 S OH PI ORG 2/25/11  
 A003374 NCMP I ORG 2/25/11  
 A003348 SUH Career Tech 2/10/11  
 A001341 CVH Career Tech 10/14/09

Not Prop'd

STATE MATCH GRAN TOTAL \$61,030,085  
 JAN 2011 FEB 2011



**PROPOSITION O - Projects**  
**LONG RANGE FACILITIES MASTER PLAN (LRFMP)**  
**Through April 30, 2012**

Site	"A"	"B"	"C"	"D"	"E"	"F"	"G"	"H"	"I"	"J"	"K"	"L"
	"A"	"B"	"C"	"D"	"E"="A+B+C+D"	"F"	"G"	"H" = "F + G"	"I"	"J"	"K" = "I + J"	"L"="H - K"
	FUNDING					BUDGET			ACTUAL COSTS			BALANCE(S)
	Proposition "O" - Bond Funding Available	Grants/State Matching Funds	Prop BB Balance	Funding from Interest	Total Available Funding	Original Budget	Revisions	Revised Budget	Expenditures Year to Date	Estimate Costs to Complete	Total Project Costs (At Completion)	Projected Budget Available Balances
Chula Vista Middle	\$ 8,649,707	\$ 850,731	\$ 2,242,398	\$ -	\$ 11,742,836	\$ 10,892,105	\$ 401,534	\$ 11,293,639	\$ 10,933,555	\$ 360,084	\$ 11,293,639	\$ -
Granger Junior High	\$ -	\$ -	\$ 316,997	\$ -	\$ 316,997	\$ 316,997	\$ (48,868)	\$ 268,129	\$ 268,129	\$ -	\$ 268,129	\$ -
Hilltop Middle	\$ -	\$ -	\$ -	\$ 23,700	\$ 23,700	\$ 23,700	\$ -	\$ 23,700	\$ 23,700	\$ -	\$ 23,700	\$ -
Montgomery Middle - Design	\$ -	\$ -	\$ -	\$ -	\$ -	\$ -	\$ 4,425,690	\$ 4,425,690	\$ 3,536,341	\$ 889,349	\$ 4,425,690	\$ -
National City Middle	\$ 16,191,703	\$ 1,588,448	\$ -	\$ -	\$ 17,780,151	\$ 16,191,703	\$ (2,968,599)	\$ 13,223,104	\$ 12,875,137	\$ 347,967	\$ 13,223,104	\$ -
National City Middle Proj 2	\$ 15,273,601	\$ -	\$ -	\$ -	\$ 15,273,601	\$ 15,273,601	\$ (11,406,163)	\$ 3,867,438	\$ 974,006	\$ 1,395,010	\$ 2,369,016	\$ 1,498,422
Southwest Middle	\$ 14,738,042	\$ 1,548,791	\$ -	\$ -	\$ 16,286,833	\$ 14,738,042	\$ 5,437,518	\$ 20,175,560	\$ 13,054,883	\$ 7,120,677	\$ 20,175,560	\$ -
Bonita Vista High	\$ -	\$ -	\$ 451,291	\$ -	\$ 451,291	\$ 451,291	\$ (142,169)	\$ 309,122	\$ 309,122	\$ -	\$ 309,122	\$ -
Chula Vista High	\$ 24,519,408	\$ 8,789,813	\$ -	\$ -	\$ 33,309,221	\$ 27,519,408	\$ 1,507,540	\$ 29,026,948	\$ 25,817,641	\$ 3,209,307	\$ 29,026,948	\$ -
Hilltop High	\$ 19,741,358	\$ 11,382,634	\$ -	\$ -	\$ 31,123,992	\$ 19,741,358	\$ 4,367,188	\$ 24,108,546	\$ 23,486,127	\$ 622,419	\$ 24,108,546	\$ -
Mar Vista High	\$ 10,417,900	\$ 2,835,832	\$ -	\$ -	\$ 13,253,732	\$ 10,417,900	\$ 2,337,417	\$ 12,755,317	\$ 9,449,373	\$ 470,112	\$ 9,919,485	\$ 2,835,832
Montgomery High	\$ 20,913,971	\$ 1,258,674	\$ -	\$ -	\$ 22,172,645	\$ 20,913,971	\$ 7,029,324	\$ 27,943,295	\$ 24,668,999	\$ 2,015,622	\$ 26,684,621	\$ 1,258,674
Southwest High	\$ 24,467,998	\$ 8,013,531	\$ -	\$ -	\$ 32,481,529	\$ 24,467,998	\$ (6,624,249)	\$ 17,843,749	\$ 12,829,660	\$ 5,014,089	\$ 17,843,749	\$ -
Sweetwater High	\$ 25,086,312	\$ 25,391,414	\$ 12,000,000	\$ -	\$ 62,477,726	\$ 38,522,133	\$ 11,493,047	\$ 50,015,180	\$ 47,148,474	\$ 2,866,706	\$ 50,015,180	\$ -
Planning & Operations	\$ -	\$ -	\$ -	\$ -	\$ -	\$ -	\$ 4,208,519	\$ 4,208,519	\$ 2,969,415	\$ 1,239,104	\$ 4,208,519	\$ -
MAAC Charter School	\$ -	\$ -	\$ -	\$ 250,000	\$ 250,000	\$ 250,000	\$ -	\$ 250,000	\$ 60,373	\$ 189,627	\$ 250,000	\$ -
Smartboards-CPH & MVM	\$ -	\$ -	\$ -	\$ 28,577	\$ 28,577	\$ 28,577	\$ -	\$ 28,577	\$ 27,036	\$ 1,541	\$ 28,577	\$ -
Interim Housing/ADA Bond Sale 1	\$ -	\$ -	\$ -	\$ -	\$ -	\$ -	\$ -	\$ -	\$ -	\$ -	\$ -	\$ -
Title 9 - MVH	\$ -	\$ -	\$ -	\$ -	\$ -	\$ -	\$ 200,000	\$ 200,000	\$ 43,548	\$ 156,452	\$ 200,000	\$ -
Title 9 - HTH	\$ -	\$ -	\$ -	\$ -	\$ -	\$ -	\$ 750,000	\$ 750,000	\$ -	\$ 750,000	\$ 750,000	\$ -
Chula Vista Middle - Renovation of Relos	\$ -	\$ -	\$ -	\$ -	\$ -	\$ -	\$ 500,000	\$ 500,000	\$ -	\$ 500,000	\$ 500,000	\$ -
Sweetwater High - ORG Relo Removal	\$ -	\$ -	\$ -	\$ -	\$ -	\$ -	\$ 2,000,000	\$ 2,000,000	\$ -	\$ 2,000,000	\$ 2,000,000	\$ -
Long Range Facilities Master Plan - Update	\$ -	\$ -	\$ -	\$ -	\$ -	\$ -	\$ 300,000	\$ 300,000	\$ -	\$ 300,000	\$ 300,000	\$ -
Fire Alarm Upgrades at various sites	\$ -	\$ -	\$ -	\$ -	\$ -	\$ -	\$ 2,662,351	\$ 2,662,351	\$ -	\$ 2,662,351	\$ 2,662,351	\$ -
Power Purchase Agreement at 10 Sites	\$ -	\$ -	\$ -	\$ -	\$ -	\$ -	\$ 500,000	\$ 500,000	\$ -	\$ 500,000	\$ 500,000	\$ -
Chula Vista High - ORG Relo Removal	\$ -	\$ -	\$ -	\$ -	\$ -	\$ -	\$ 1,100,000	\$ 1,100,000	\$ -	\$ 1,100,000	\$ 1,100,000	\$ -
Sweetwater Synthetic Track and Field	\$ -	\$ -	\$ -	\$ -	\$ -	\$ -	\$ 2,200,000	\$ 2,200,000	\$ -	\$ 2,200,000	\$ 2,200,000	\$ -
Montgomery Middle	\$ -	\$ -	\$ -	\$ -	\$ -	\$ -	\$ 25,193,967	\$ 25,193,967	\$ 528,936	\$ 24,665,031	\$ 25,193,967	\$ -
IPAD Initiative	\$ -	\$ -	\$ -	\$ -	\$ -	\$ -	\$ 1,800,000	\$ 1,800,000	\$ -	\$ 1,800,000	\$ 1,800,000	\$ -
<b>Totals</b>	<b>\$ 180,000,000</b>	<b>\$ 61,659,868</b>	<b>* \$ 15,010,686</b>	<b>\$ 302,277</b>	<b>\$ 256,972,831</b>	<b>\$ 199,748,784</b>	<b>\$ 57,224,047</b>	<b>\$ 256,972,831</b>	<b>\$ 189,004,455</b>	<b>\$ 62,375,448</b>	<b>\$ 214,173,585</b>	<b>\$ 5,592,928</b>

Uncommitted

\* This includes \$4,435,821 in CTE Grants

Total Funding Available:	\$ 256,972,831
Less: PM Contract Amount:	\$ 29,237,175
Subtotal:	227,735,656
% of PM Contract/Funding	12.84%
PM Reimbursables Contract:	\$ 2,140,589

Total Expenditures:	189,004,455
Less: PM paid to date:	24,411,979
Subtotal:	164,592,476
% of PM Contract/Funding	14.83%
PM Reimbursables Paid:	\$ 1,479,534

NOTE: Program/Construction Management Costs Included Above

Montgomery High Gymnasium JPA County Project for \$23,000,000 was approved by the board on May 7, 2012, Resolutions 4140 & 4141. Please note: This project is not included above.



**Proposition O Citizens' Bond Oversight Committee  
Future Meetings**

<b>Current</b>	<b>Proposed</b>
Thursday, July 12, 2012, 5:45 PM – Southwest High (Meeting and Site Tour)	No Change
Saturday, August 11, 2012, 9:00 AM – Sweetwater High (Meeting and Site Tour)	Thursday, August 9, 2012, 5:45 PM – Board Room
Thursday, September 6, 2012, 5:45 PM – Southwest High (Meeting)	No Change
Saturday, October 13, 2012, 9:00 AM – National City Middle (Meeting and Site Tour)	Change location to Montgomery Middle School
Thursday, November 8, 2012, 5:45 PM – Southwest Middle (Meeting)	Change location to Board Room
No December Meeting	No Change
No January Meeting	Thursday January 17, 2013 5:45 PM – Board Room
Thursday, February 21, 2013, 5:45 PM – Board Room	Saturday, February 9, 2013 9:00 AM – Montgomery Middle School.